



Dual Head
Pocket Ultrasound
USB&WiFi
Mobilne USG 3 w1



Point-of-care Ultrasound

Scan more with one probe



Anti-skid design

- Safer and more reassuring operation



Only 182g

- Smaller than iPhone
- USB&WiFi 2 connections

4 colors for you



C10TX:
convex+linear+cardiac 3 in 1 probe

C10HL:
cardiac+linear 2 in 1 probe



Built-in 2 batteries

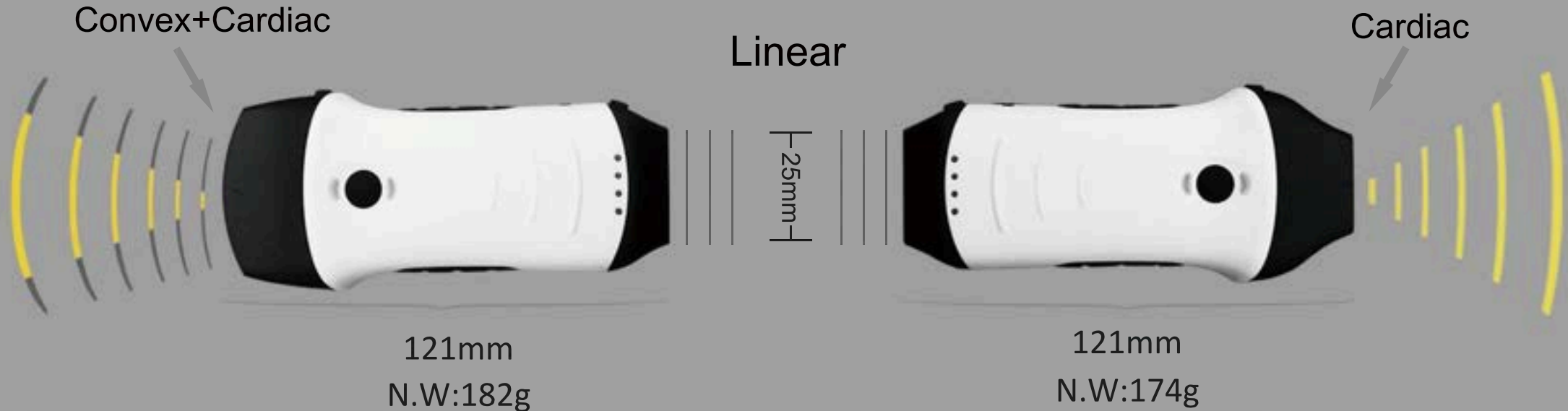
- Wireless charging
- Support working while charging by cable



Full Waterproof

- IP68 level
- Built-in cooling coating

Probe Specs



Convex array probe
Freq:2.5/5MHz 3.5/5MHz
Depth: 90-160mm 90-305mm
Radius:R45
Scan angle:48°

Presets:

- ✓ Abdomen
- ✓ Gynecology
- ✓ Obstetric
- ✓ Cardiac
- ✓ Urology
- ✓ Kidney
- ✓ Lung

Linear array probe
Freq:7.5/10MHz
Depth: 20-100mm
Footprint: L25mm

Presets:

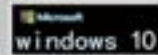
- ✓ Thyroid
- ✓ Smallparts
- ✓ Pediatrics
- ✓ Vascular
- ✓ VesselFlow
- ✓ Carotid
- ✓ Breast
- ✓ MSK
- ✓ Nerve

Phased array probe
Freq:2.2/3.6MHz
Depth:90-240mm
Footprint:25x16mm
Scan angle:80°

Presets:

- ✓ Cardiac
- ✓ Abdomen

Download “MY USG” from App Store / Google Play



Compatibility

- √ IOS 11.0 or later:
iphone7(plus) ~ iphone13 series or later
ipad Air2 ~ipad mini 5~ipad Pro series
or later
- √ Android 14 or later
- √ Windows 10 version PC

Common Specs



Element: Dual 128

Connection: USB&WiFi

Channel:Dual 32

Display mode: B, B/M, Color, PW,
PDI, B+Color+PW

Presets 16+:

Abdomen, GYN, OB, Cardiac, Urology, Kidney,
Lung,Thyroid, Small parts, Pediatrics, Vascular,
Carotid, Breast, Msk, Nerve, User1, User2



Image frame rate: 24f/s

Cine play: 100/200/500/1000

Auto play, Manual play

Image save: jpg, avi, MP4 and DICOM

WiFi type: Built-in WiFi

802.11g/20MHz/5G/450Mbps

USB type: Dual USB-C

Host: Android/IOS/Windows Tablet
, Smart phone, PC



Measurement:

B: Length, Area/Circumference, Angle, Trace, Distance

GA(CRL,BPD,GS,FL,HC,AC)EFW(BPD,FL)

B+M: Heart rate, Time, Distance, LVID(LVIDd, LVIDs, EF, SV)

B+PW: Velocity, Heart rate(2), S/D, Depth.

Automatic Vessel Flow Measure: PS, ED, TAMAX, TAMEAN, PI, RI, S/D, DIAM, FL

Friendly Operating Interface

Datasheet

·You can save the scanned picture,video, report



Dual screen

·Analyze and compare imaging in any 2 modes



Multiple modes

·Switch between B, B+B, B/M, Color, PW, PDI, B+Color+PW.



Annote

·Doctors can add markers or notes on the imaging.



Print

·The imaging or report of patient can be printed by printer.



Measure Magnify

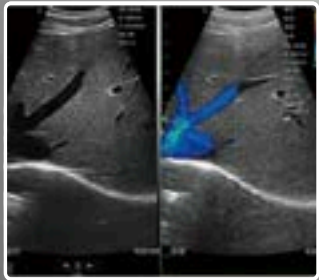
·Measure the boundary of smaller target more accurately.



Clinical Image



Convex probe



B+Color Liver



B Fetus



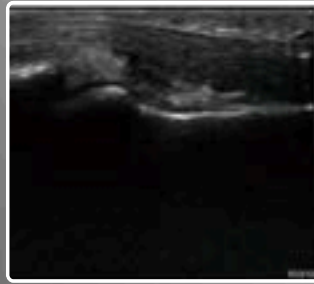
B+Color Kidney



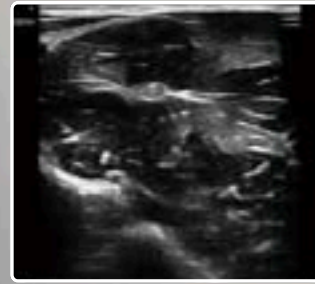
B+Color



Linear probe



B MSK



B Nerve



B+Color Artery



B+Color Thyroid



Phased probe



B+PW



B Cardiac



B+Color+PW



B Gallbladder



Better Ultrasound Better Life

**Autoryzowany
Dystrybutor w Polsce
www.medicalspot.pl**

